

## OUTLINE

### Assessing Abdominal Pain

- The diagnostic tool chest
- Learn from memorable case studies
- How the PQRST system helps make the diagnosis:
  - P: Positional, palliating, provocative factors
  - Q: Quality
  - R: Region, radiation, referral
  - S: Severity
  - T: Temporal factors
- Looming emergency or just an ileus?

### Assessing Elevated Liver Function Tests

- Clinical importance of liver function tests
- Non-Alcoholic Fatty Liver Disease: A new epidemic
- Identify at-risk patients and the best treatments available
- Commonly-encountered gallbladder duct dilemmas
- The A, B, Cs of Hepatitis

### Colon Cancer Prevention

- Best practices for colon cancer prevention
- Who needs a colonoscopy?
- Hemoccult, "FIT," and "Cologuard"
- What you need to know about "interval" cancer
- Young patients with colon cancer

### Clostridium Difficile Challenges

- Understanding the importance of a "carrier state"
- Clostridium difficile prevention
- Antibiotic choices
- How to assess recurrences
- Potential risks of fecal transplants
- How Probiotics may help
- How many recurrences until we utilize fecal transplant?
- Avoiding complications

### Evaluating and Treating GI Bleeding

- Assessing your patient
- Upper, lower or small bowel source
- Advanced techniques to localize the source of bleeding
- Non-surgical treatment of GI bleeding
- Our great challenge: The very elderly population and GI bleeding

### Successful Management of Irritable Bowel Syndrome

- How we make a diagnosis in 2019
- Are we missing another diagnosis?
- Importance of "alarm symptoms"
- Partnering with your patient
- Understanding a FODMAP diet
- OTC medicines that help
- Latest treatments

**FREE Infographic!**

**THE HEART IN DETAIL**

ACCESS TODAY

[healthcare.pesi.com/heartindetail](http://healthcare.pesi.com/heartindetail)

**Bring any training in-house!**

Convenient • Cost-Effective • Customizable

for more information visit  
[www.pesihealthcare.com/inhouse](http://www.pesihealthcare.com/inhouse)

NON-PROFIT  
ORGANIZATION  
US POSTAGE PAID  
EAU CLAIRE, WI  
PERMIT NO 32729

PESI HealthCare  
P.O. Box 1000  
Eau Claire, WI 54702-1000  
A Division of PESI, Inc.

# GI BOOTCAMP for the Healthcare Team

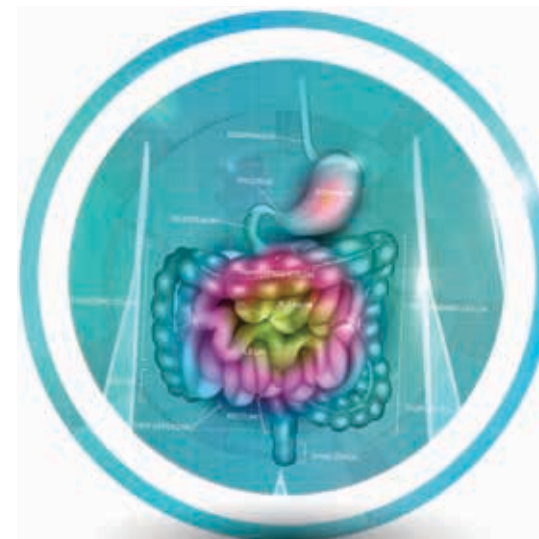
**Sacramento, CA**

Wednesday  
September 18, 2019

**Honolulu, HI**

Monday  
September 23, 2019

**PESI**  
HealthCare  
[www.pesihealthcare.com](http://www.pesihealthcare.com)

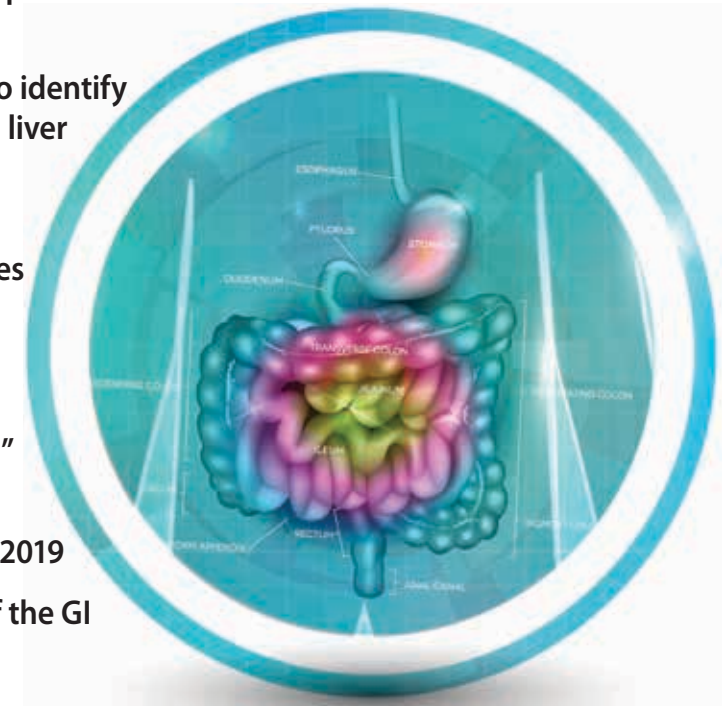


**Target Audience:** Nurses, Nurse Practitioners, Clinical Nurse Specialists, Physician Assistants

# GI BOOTCAMP for the Healthcare Team

Featuring Clinical Gastroenterologist: **Peter Buch, MD, AGAF, FACP**

- Assessing abdominal pain: Is an emergency looming?
- The BEST strategies to identify the cause of elevated liver function tests
- Clostridium difficile: How many recurrences until we utilize fecal transplant?
- What you need to know about "interval" colon cancer
- Probiotic treatments 2019
- Identify the source of the GI bleed
- Irritable bowel syndrome: Importance of "alarm symptoms"



**Sacramento, CA**  
Wednesday  
September 18, 2019

**Honolulu, HI**  
Monday  
September 23, 2019

**PESI**  
HealthCare

[www.pesihealthcare.com](http://www.pesihealthcare.com)  
A Non-Profit Organization Connecting  
Knowledge with Need Since 1979

### Have a seminar idea? A manuscript to publish?

The nation's top speakers and authors contact PESI HealthCare first. If you are interested in becoming a speaker, or have a new topic idea, please contact Missy Cork at [mcork@pesi.com](mailto:mcork@pesi.com) or call (715) 855-6366.

**REGISTER NOW: [pesihc.com/express/72285](http://pesihc.com/express/72285)**

**REGISTER NOW: [pesihc.com/express/72285](http://pesihc.com/express/72285)**

# GI BOOTCAMP

## for the Healthcare Team

Last week, you met Henry, a 67-year-old man who was seen for rectal bleeding and who had an Hgb of 9. He tells you that he had a normal screening colonoscopy just 1 year ago. Now workup reveals a sigmoid cancer. How could this happen? How can we prevent this from occurring in other patients? Let's learn about "alarm symptoms," key colon cancer risk factors, "interval cancer," the latest alternatives to colonoscopy and ways to ensure that our patients stay on their colon cancer screening schedules.

*How many times have you been frustrated when you review your patient's abnormal liver function tests? Is it Hepatitis A, B, C, a medication side effect or Fatty Liver Disease?*

*Are statins OK in your patient?*

*How do we choose between ASA and Acetaminophen in chronic liver disease?*

Learn from Clinical Gastroenterologist, Peter Buch, MD, AGAF, FACP, and leave this training with the following skills:

- Confidently assess patients presenting with acute and chronic abdominal pain
- Understand the latest treatments for Clostridium Difficile
- The latest techniques to evaluate and treat GI bleeding
- Help differentiate Irritable Bowel Syndrome from other conditions

### SPEAKER BIO

**Peter Buch, MD, AGAF, FACP**, is a clinical gastroenterologist with over 30 years of specialty experience to draw from. He completed his internship and Residency in Internal Medicine and his Fellowship in Gastroenterology at Long Island Jewish-Hillside Medical Center. His current practice is in Manchester, Connecticut, where he has assembled a team that treats all GI conditions. "We pride ourselves on giving each patient the time and care they need," says Dr. Buch. This has resulted in outstanding patient evaluations and much better outcomes.

Dr. Buch has a passion for teaching. His expertise has been shared with experienced clinicians and advanced level students. He teaches at the University of Connecticut School of Medicine, the University of New England College of Osteopathic Medicine, the Frank H Netter School of Medicine/Quinnipiac University and the University of Connecticut APRN School. Dr. Buch's style is case-based, practical, very interactive and fun. Upon completion of his seminar, you will have a virtual toolbox of new clinical ideas. He ALWAYS learns from his audiences and looks forward to learning with you!

#### Speaker Disclosure:

Financial: Peter Buch is an Associate Clinical Professor of Medicine at the University of Connecticut School of Medicine; and at the University of New England College of Osteopathic Medicine. He is an Association Professor at Frank H. Netter School of Medicine/Quinnipiac University. Dr. Buch receives a speaking honorarium from AbbVie Synergy Pharmaceuticals. Peter Buch receives a speaking honorarium from PESI, Inc.

Non-financial: Peter Buch is a member of the American College of Gastroenterology where he serves on the FDA Committee and the Patient Care Committee.

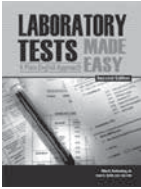
#### Content Disclosure:

Dr. Buch references the use of antidepressants for Irritable Bowel Syndrome; and the controversial use of Fibrotest to evaluate patients with fatty liver disease who may have fibrosis of the liver. Dr. Buch indicates he wishes to present a fair and balanced approach to practitioners regarding such practices.

### OBJECTIVES

1. Evaluate acute and chronic abdominal pain.
2. Choose between commonly-ordered liver function tests for clinical significance.
3. Explain what you need to know about Hepatitis C.
4. Determine the current best practices in colon cancer prevention.
5. Understand which medical conditions respond to probiotics.
6. Analyze the best strategies to determine the source of the GI bleed.
7. Explore important updates in Clostridium difficile treatment.
8. Plan to incorporate the newest strategies for successful treatment of Irritable Bowel Syndrome.

### Save by including these products with your seminar registration!



#### Laboratory Tests Made Easy: A Plain English Approach, Second Edition

By Mikel Rothenberg, MD & Sean G. Smith, BSN, CCRN

This best-selling reference book provides both the "need to know" information, as well as the more in-depth "nice to know" details relevant to your patient's lab results. In this Second Edition you will find plain English summaries, pertinent case studies, and easy to read diagrams and tables. This fully revised and updated book puts the information right at the fingertips of any medical professional at any experience level. Laboratory Tests Made Easy is a must for your professional library. (2014)



#### RNotes®: Nurse's Clinical Pocket Guide, 5th Edition

By Ehren Myers, RN

A DAVIS'S NOTES BOOK!

Access the clinically oriented content you need to deliver safe and effective health care in hospital and home settings for all of your patients. Its handy pocket size and waterproof pages are great for students and educators on the go, while NCLEX tips, highlighted throughout, make it perfect for those preparing for the licensure exam.

Visit our Online Product Store: [www.pesihealthcare.com/store](http://www.pesihealthcare.com/store)

**Seminar on CD or DVD Package** You can purchase a self-study package on the subject. You will receive a set of CDs or DVDs that include a digital copy of the seminar manual and post-test/evaluation. You and your colleagues can receive CE hours for a nominal fee. To determine if homestudy credits are available for your profession go to [www.pesihealthcare.com](http://www.pesihealthcare.com) or call 800-844-8260. Check with your licensing board to verify acceptance of self-study credits for license renewal. Order today by using the order form on this brochure or by calling 800-844-8260.

**Cancellation Policy:** If you contact us before the event date, you can exchange for a DVD or CD/digital manual package on the subject (self-study continuing education credit may be available), a certificate to attend another seminar, or receive a tuition refund less a \$30 cancel fee. Substitutions are permitted at any time.



### PESI Nurse Guarantee

Your satisfaction is our goal... and our guarantee! If you are not satisfied with this GI Bootcamp training, let us know and we'll make it right.

*Missy Cork*  
Missy Cork MSN, RN-BC  
PESI Healthcare



PESI Inc. is proud to offer this seminar (at these locations only) *free* of charge (on live seminar tuition) for veterans and active duty military personnel. **Limited seats available; advance online registration required.**

### Live Seminar Continuing Education Credit Information

*Credits listed below are for full attendance at the live event only. After attendance has been verified, pre-registered attendees will receive an email from PESI Customer Service with the subject line, "Evaluation and Certificate" within one week. This email will contain a link to complete the seminar evaluation and allow attendees to print, email or download a certificate of completion if in full attendance. For those in partial attendance (arrived late or left early), a letter of attendance is available through that link and an adjusted certificate of completion reflecting partial credit will be issued within 30 days (if your board allows). Please see "LIVE SEMINAR SCHEDULE" on this brochure for full attendance start and end times. NOTE: Boards do not allow credit for breaks or lunch.*

*If your profession is not listed, please contact your licensing board to determine your continuing education requirements and check for reciprocal approval. For other credit inquiries not specified below, or questions on home study credit availability, please contact [cepesi@pesi.com](mailto:cepesi@pesi.com) or 800-844-8260 before the event.*

*Materials that are included in this course may include interventions and modalities that are beyond the authorized practice of mental health professionals. As a licensed professional, you are responsible for reviewing the scope of practice, including activities that are defined in law as beyond the boundaries of practice in accordance with and in compliance with your profession's standards.*

*PESI, Inc. offers continuing education programs and products under the brand names PESI, PESI Healthcare, PESI Rehab and Psychotherapy Networker.*

**NURSES/NURSE PRACTITIONER/CLINICAL NURSE SPECIALISTS:** PESI, Inc. is accredited as a provider of continuing nursing education by the American Nurses Credentialing Center's Commission on Accreditation.



Nurses in full attendance will earn 6.3 contact hours. Partial contact hours will be awarded for partial attendance.

**CALIFORNIA NURSES:** PESI, Inc. is a provider approved by the California Board of Registered Nursing, Provider Number 13305 for 6.0 contact hours. Full attendance is required. No partial contact hours will be issued for partial attendance.

**CALIFORNIA NURSES ONLY:** PESI must have your license number on file in order for your hours to be valid. While completing the online post-test/evaluation, please answer YES to the question: "Are you a California Nurse?" and include your license number. After completing and passing the online post-test/evaluation, your information will automatically be sent to [cepesi@pesi.com](mailto:cepesi@pesi.com) to be filed. If you forget to answer yes, please send an email to [cepesi@pesi.com](mailto:cepesi@pesi.com) with the following information: full title of the activity, speaker name, date of live broadcast, date you completed the post-test, and your name and your license number.

**PHYSICIAN ASSISTANTS:** AAPA accepts certificates of participation for educational activities certified for AMA PRA Category 1™ from organizations accredited by ACCME such as PESI. Physician assistants may receive a maximum of 6.0 hours of Category 1 credit for completing this program.

**OTHER PROFESSIONS:** This activity qualifies for 380 minutes of instructional content as required by many national, state and local licensing boards and professional organizations. Save your course outline and certificate of completion, and contact your own board or organization for specific requirements.



#### ADA NEEDS

We would be happy to accommodate your ADA needs; please call at least two weeks prior to the seminar date.

#### WALK-INS

Walk-ins are welcome but admission cannot be guaranteed. Call M-F 7:00-6:00 Central Time for space availability if registering within one week of seminar.

#### TUITION OPTIONS

• **FREE Military Tuition:** PESI Inc. is proud to offer this seminar (at these locations only) free of charge (on live seminar tuition) for veterans and active duty military personnel. **Limited seats available; advance online registration required.**

• **\$30 Tuition:** If you are interested in being our registration coordinator for the day, go to: [www.pesihealthcare.com/coord](http://www.pesihealthcare.com/coord) for availability and job description, or call our Customer Service Dept. at 800-844-8260.

• **Groups of 10 or more:** Call 800-844-8260 for discounts.

• **Discounted Student Rate:** As part of its mission to serve educational needs, PESI, Inc. offers a reduced rate of 50% off standard tuition for students. Enclose a current student schedule with registration form. Go to [www.pesihealthcare.com/faqs](http://www.pesihealthcare.com/faqs) or call 800-844-8260 for details. **Advance registration required.**  
*Cannot be combined with other discounts.*

FOR OFFICE USE ONLY

MRC

Fed ID # 26-3896894 © 2019 PESI, Inc.

## How to Register

### GI BOOTCAMP FOR THE HEALTHCARE TEAM

Questions? Visit [www.pesihealthcare.com/faqs](http://www.pesihealthcare.com/faqs), or call 800-844-8260

#### ONLINE

[pesihc.com/express/72285](http://pesihc.com/express/72285)

#### PHONE

800-844-8260

Please have credit card available

#### FAX

800-554-9775

#### MAIL

PESI HealthCare  
PO BOX 1000  
Eau Claire, WI  
54702-1000

**1 Please complete entire form** (to notify you of seminar changes):  
*please print; staple duplicate forms.*

#### Mail Code:

*See mail code box on address panel on reverse side*

Name \_\_\_\_\_ Profession \_\_\_\_\_

Employer Name \_\_\_\_\_

Employer Address \_\_\_\_\_

Dept/Floor/Suite \_\_\_\_\_

City \_\_\_\_\_ County \_\_\_\_\_

State \_\_\_\_\_ Zip \_\_\_\_\_

Home/Cell Ph ( ) \_\_\_\_\_

Dept. Ph ( ) \_\_\_\_\_

\*E-mail address \_\_\_\_\_

**\*Registrant's e-mail is required to receive your certificate of completion and registration confirmation.**

**2 Check location:** *(make copy of locations)*

☐ **SACRAMENTO, CA**

**September 18, 2019**

72285SAC

Crowne Plaza Sacramento Northeast

5321 Date Avenue • 95841

(916) 338-5800

☐ **HONOLULU, HI**

**September 23, 2019**

72285HON

Hyatt Regency Waikiki

2424 Kalakaua Ave • 96815

(808) 923-1234

### REGISTER NOW

[pesihc.com/express/72285](http://pesihc.com/express/72285)

**3 Check tuition:**

**TUITION** with seminar manual

**\$199.99** (+ tax in HI) – choose one of the options below:

☐ per person for 2 or more preregistering together —OR—

☐ single registration postmarked 3 weeks prior to seminar date

☐ **\$189.99** (+ tax in HI) per person for 5 or more preregistering together

☐ **\$219.99** (+ tax in HI) standard

#### ADD-ON PRODUCTS

Distributed at seminar—FREE SHIPPING!

☐ **\$29.99\*** *Laboratory Tests Made Easy, 2nd Edition* book

☐ **\$34.95\*** *RNotes®: Nurse's Clinical Pocket Guide, 5th Edition* book

*\*Attendees add applicable state and local taxes except in AK, DE, MT, NH, OR*

**4 Indicate method of payment:**

**ALL REGISTRATIONS MUST BE PREPAID.**  
**Purchase orders welcome (attach copy).**

☐ Check enclosed payable to **PESI, Inc.**

☐ MC 16 digits ☐ VISA 13-16 digits ☐ AE 15 digits ☐ Discover Novus 16 digits

Card # \_\_\_\_\_

Card Exp. \_\_\_\_\_ V-Code #\*: \_\_\_\_\_

Signature \_\_\_\_\_

*(\*MC/VISA/Discover: last 3-digit # on signature panel on back of card.)*

*(\*American Express: 4-digit # above account # on face of card.)*

#### CAN'T ATTEND THE SEMINAR?

See below for individual product orders

#### GI Bootcamp for the Healthcare Team

\_\_\_\_ Seminar on DVD\* (video) \$199.99 (RNV077640)

\_\_\_\_ Seminar on CD\* (audio) \$169.99 (RNA077640)

\_\_\_\_ **Laboratory Tests Made Easy, 2nd Edition** book\* \$29.99 (PUB082860)

\_\_\_\_ **RNotes®: Nurse's Clinical Pocket Guide, 5th Edition** book\* \$34.95 (SAM082320)

CE hours and approvals on products may differ from live CE approvals.

\*Shipping is \$6.95 first item + \$2.00 each add'l item.

\*\*Residents add applicable state and local taxes except in AK, DE, MT, NH, OR

Product total \$ \_\_\_\_\_

\*Shipping \_\_\_\_\_

**Subtotal** \_\_\_\_\_

\*\*Tax \_\_\_\_\_

**TOTAL** \_\_\_\_\_