

Outline

Trauma in Pregnancy: Managing a Potential Catastrophe!

Triage: How Much is Too Much?
Labs: What's NOT Normal in Pregnancy
CPR with a Gravid Abdomen
When to Consider "Bedside Cesarean"

Management Strategies for Hemorrhage

Risk Evaluation & Prevention
3rd Stage Management
Qualitative vs. Quantitative Assessment
Is Misoprostol all it's Cracked Up to Be?
Current Medication Recommendations
Triggering Massive Transfusion Protocols

Amniotic Fluid Embolism

Are We Putting Her at Risk?
What Does the Differential Look Like?
Rapid Response That May Save Her Life

Severe Hypertensive Disorders in Pregnancy

How Does This Happen: Update on Pathophysiology for Today's Patient
Urgent Treatment Thresholds
The Best & Latest Medications
Fetal Evaluation: From NSTs to UARs & Everything in Between
Post-Partum Management

Questions?

Call customer service at
800-844-8260



CANCELLATION POLICY: If you contact us before the event date, you can exchange for a DVD or CD/digital manual package on the subject (self-study continuing education credit may be available), a certificate to attend another seminar, or receive a tuition refund less a \$30 cancel fee. Substitutions are permitted at any time.

VIOLENCE!

More Common Than You Think, Do You Know How to React?
The Angry Partner
Being Threatened with Violence
Developing an Action Plan for Crisis Events
Where & When to Get Help

The At-Risk Newborn

Umbilical Artery Studies
Identifying a Problem
What All the Numbers Mean
When to Watch & When it is an Emergency

Live Seminar Schedule

7:30 Registration/Morning Coffee & Tea
8:00 Program begins
11:50-1:00 Lunch (*on your own*)
4:00 Program ends
There will be two 15-min breaks (mid-morning & mid-afternoon).
Actual lunch and break start times are at the discretion of the speaker.
A more detailed schedule is available upon request.
For locations and maps, go to www.pesihealthcare.com, find your event, and click on the seminar title.

Objectives

- 1 Identify three clinical manifestations of amniotic fluid embolism.
- 2 Describe the most common causes of obstetric trauma.
- 3 Discuss management options for post-partum hemorrhage.
- 4 Explain why a d-dimer is no longer recommended as part of the evaluation for pulmonary embolism in pregnancy.
- 5 Analyze why neurological outcomes with amniotic fluid embolism are so poor and the rapid interventions that could make a difference.
- 6 Compare the various treatment options for the obstetrical patient with severe hypertension.

FREE
Infographic!

THE HEART
IN DETAIL

ACCESS TODAY

healthcare.pesi.com/heartindetail

NON-PROFIT
ORGANIZATION
US POSTAGE PAID
EAU CLAIRE, WI
PERMIT NO 32729

Bring any training in-house!

Convenient • Cost-Effective • Customizable

for more information visit
www.pesihealthcare.com/inhouse

PESI HealthCare
P.O. Box 1000
Eau Claire, WI 54702-1000
A division of PESI, Inc.

OB Emergencies

FEATURING:
Jamie Otremba, MSN, RN, CNM

LANCASTER, PA
Monday
September 9, 2019

BETHLEHEM, PA
Tuesday
September 10, 2019

CHERRY HILL, NJ
Wednesday
September 11, 2019

REGISTER NOW: pesihc.com/express/72215

OB Emergencies

FEATURING:
Jamie Otremba, MSN, RN, CNM

- Trauma in Pregnancy: Managing a Potential Catastrophe!
- Management Strategies for Severe Hypertension
- Rapid Response for Amniotic Fluid Embolism
- Triggering Massive Transfusion Protocols with Post-Partum Hemorrhage
- When to React to the Numbers for the At-Risk Newborn
- Unexpected Family Violence: Mediator Skills You MUST Know

LANCASTER, PA
Monday
September 9, 2019

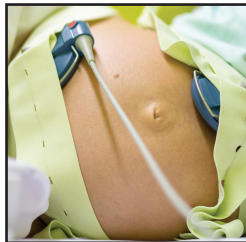
BETHLEHEM, PA
Tuesday
September 10, 2019

CHERRY HILL, NJ
Wednesday
September 11, 2019

Earn
1.5
CE hours of
Pharmacology
credit

www.pesihealthcare.com
A NON-PROFIT ORGANIZATION CONNECTING
KNOWLEDGE WITH NEED SINCE 1979

REGISTER NOW!
pesihc.com/express/72215



OB Emergencies

Jamie Otremba, MSN, RN, CNM, will delve into the most common obstetrical emergencies presenting in today's patients. She will provide you with a comprehensive look at the critical interventions for:

- Trauma in Pregnancy
- Severe Hypertensive Disorders in Pregnancy
- Managing Amniotic Fluid Embolism
- The Latest Recommendations for Post-Partum Hemorrhage
- Urgent vs. Emergent Newborn Conditions
- Interventions to Manage Violent Situations in the OB Setting

Jamie's extensive experiences in high risk obstetrics have provided her with keen insight into these often challenging and frightening situations. She is eager to share with you many of the effective interventions that she has acquired throughout her career. Through enlightening case studies, persuasive evidence-based research and an engaging presentation style, she will teach you the current trends and treatments you need to know to manage the next OB emergency. Attend this seminar to learn new strategies and techniques that can immediately impact the maternal and fetal outcomes of your patients!

Speaker

Jamie Otremba, MSN, RN, CNM, has over 20 years of maternal child nursing experience and is currently practicing full scope nurse-midwifery at a progressive OB/GYN clinic in suburban Minnesota. Jamie has been active in program development and benchmarking in both clinic and hospital settings. She is also one of the medical directors for the Women's and Children's Service Line at a large hospital and medical center in Minnesota. Jamie served as an assistant professor at Minnesota State University and has practiced in women's health care in a variety of settings, including: labor and delivery, postpartum, antenatal, and community health nursing. She has consulted for area health care facilities on clinical and legal practice topics, and she continues as an investigator for several medication trials pertinent to obstetric and gynecologic issues. Additionally, Jamie has enjoyed sharing her vast knowledge and experiences as a preceptor for both medical and advanced practice nursing students. She has treated obstetrical patients facing all of the high-risk conditions presented during this seminar day. Her goal is to provide you with the current trends, treatments and issues pertinent to high risk obstetrics to ultimately improve the maternal and fetal outcomes of your own patients.

Disclosures:
Financial: Jamie A Otremba has an employment relationship with a private women's health clinic. She receives a speaking honorarium from PESI, Inc.
Non-financial: Jamie A Otremba is a member of the American College of Nurse Midwives and the American Congress of Obstetricians and Gynecologists.



PESI Inc. is proud to offer this seminar (at these locations only) **free** of charge (on live seminar tuition) for veterans and active duty military personnel. **Limited seats available; advance online registration required.**

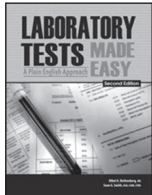
Target Audience:

Nurses • Nurse Practitioners • Clinical Nurse Specialists • Nurse Midwives • Certified Childbirth Educators

Have a seminar idea? A manuscript to publish?

The nation's top speakers and authors contact PESI HealthCare first. If you are interested in becoming a speaker, or have a new topic idea, please contact **Missy Cork** at mcork@pesi.com or call (715) 855-6366.

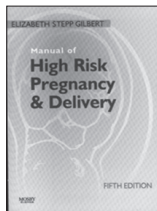
Save by Including these products with Seminar Registration!



Laboratory Tests Made Easy: A Plain English Approach, Second Edition

By Mikel Rothenberg, MD & Sean G. Smith, RN, BSN, NREMT-P, C-NPT, CCRN, CMC, CEN, CFRN, FP-C, CPEN

This best-selling reference book provides both the "need to know" information, as well as the "nice to know" details relevant to your patient's lab results. In this second edition you will find plain English summaries, pertinent case studies, and easy to read diagrams and tables.



High Risk Pregnancy & Delivery, 5th Edition

By Elizabeth Stepp Gilbert

Topics include assessment of fetal well-being, pregnancy loss and perinatal grief, ethical decision making, legal issues and risk management, sexually transmitted infections, substance abuse, health disorders complicating pregnancy and complications in pregnancy. New features include patient safety and risk management strategies, a chapter on Venous Thromboembolic Disease and standardized terminology and definitions.

Here's what one attendee had to say about this seminar...

"After I attended the wonderful OB Emergencies seminar, I was able to save a life! I had a patient come in to my hospital in labor. The patient wanted an Epidural and then started exhibiting signs of a ruptured uterus. I would have never noticed it if I would not have just attended this seminar. Right away we went in and found that yes, her uterus was in fact ruptured and we were able to save both the mother and the baby! Not only were we able to save a patient, but that patient was my niece! Thank you, Jamie, for the valuable information!"

-Attendee from California

Seminar on CD or DVD Package You can purchase a self-study package on the subject. You will receive a set of CDs or DVDs that include a digital copy of the seminar manual and post-test/evaluation. You and your colleagues can receive CE hours for a nominal fee. To determine if homestudy credits are available for your profession go to www.pesihealthcare.com or call 800-844-8260. Check with your licensing board to verify acceptance of self-study credits for license renewal. Order today by using the order form on this brochure or by calling 800-844-8260.

Live Seminar Continuing Education Credit Information

Credits listed below are for full attendance at the live event only. After attendance has been verified, pre-registered attendees will receive an email from PESI Customer Service with the subject line, "Evaluation and Certificate" within one week. This email will contain a link to complete the seminar evaluation and allow attendees to print, email or download a certificate of completion if in full attendance. For those in partial attendance (arrived late or left early), a letter of attendance is available through that link and an adjusted certificate of completion reflecting partial credit will be issued within 30 days (if your board allows). Please see "LIVE SEMINAR SCHEDULE" on this brochure for full attendance start and end times. NOTE: Boards do not allow credit for breaks or lunch.

If your profession is not listed, please contact your licensing board to determine your continuing education requirements and check for reciprocal approval. For other credit inquiries not specified below, or questions on home study credit availability, please contact cepesi@pesi.com or 800-844-8260 before the event.

Materials that are included in this course may include interventions and modalities that are beyond the authorized practice of mental health professionals. As a licensed professional, you are responsible for reviewing the scope of practice, including activities that are defined in law as beyond the boundaries of practice in accordance with and in compliance with your profession's standards.

PESI, Inc. offers continuing education programs and products under the brand names PESI, PESI Healthcare, PESI Rehab and Psychotherapy Networker.

CERTIFIED CHILDBIRTH EDUCATORS/DOULAS: This course has been approved by the ICEA for 6.0 contact hours. Program identification number: CTNC12_1118.

MIDWIVES: This course has been reviewed and approved for ACNM specialty credit. Full attendance at this course qualifies for .625 CEUs. ACNM Program #: 2017/082.

NURSES/NURSE PRACTITIONER/CLINICAL NURSE SPECIALISTS: PESI, Inc. is accredited as a provider of continuing nursing education by the American Nurses Credentialing Center's Commission on Accreditation.

Nurses in full attendance will earn 6.3 contact hours. Partial contact hours will be awarded for partial attendance.

NURSE PRACTITIONERS: This program offers 90 instructional minutes of pharmacology content which is designed to qualify for 1.5 contact hours toward your pharmacology requirement to receive credit. It is your responsibility to submit your certificate of successful completion and a copy of the seminar brochure to your licensing board.

OTHER PROFESSIONS: This activity qualifies for 380 minutes of instructional content as required by many national, state and local licensing boards and professional organizations. Save your course outline and certificate of completion, and contact your own board or organization for specific requirements.



How to Register

OB EMERGENCIES

Questions? Visit www.pesihealthcare.com/faqs, or call 800-844-8260

ONLINE

pesihc.com/express/72215

PHONE

800-844-8260

Please have credit card available

FAX

800-554-9775

MAIL

PESI HealthCare
PO BOX 1000
Eau Claire, WI
54702-1000

2 Check location: (make copy of locations)

☐ **LANCASTER, PA**
September 9, 2019 72215LNC
Lancaster Marriott At Penn Square
25 S Queen St • 17603
(717) 239-1600

☐ **BETHLEHEM, PA**
September 10, 2019 72215BTL
Comfort Suites
120 West Third Street • 18015
(610) 882-9700

☐ **CHERRY HILL, NJ**
September 11, 2019 72215CHE
Holiday Inn Cherry Hill
2175 West Marlton Pike • 08002
(856) 663-5300

REGISTER NOW
pesihc.com/express/72215

PLEASE RETURN ENTIRE REGISTRATION FORM

ADA NEEDS

We would be happy to accommodate your ADA needs; please call at least two weeks prior to the seminar date.

WALK-INS

Walk-ins are welcome but admission cannot be guaranteed. Call M-F 7:00-6:00 Central Time for space availability if registering within one week of seminar.

TUITION OPTIONS

• **FREE Military Tuition:** PESI Inc. is proud to offer this seminar (at these locations only) free of charge (on live seminar tuition) for veterans and active duty military personnel. **Limited seats available; advance online registration required.**

• **\$30 Tuition:** If you are interested in being our registration coordinator for the day, go to: www.pesihealthcare.com/coord for availability and job description, or call our Customer Service Dept. at 800-844-8260.

• **Groups of 10 or more:** Call 800-844-8260 for discounts.

• **Discounted Student Rate:** As part of its mission to serve educational needs, PESI, Inc. offers a reduced rate of 50% off standard tuition for students. Enclose a current student schedule with registration form.

Go to www.pesihealthcare.com/faqs or call 800-844-8260 for details.

Advance registration required.

Cannot be combined with other discounts.

1 Please complete entire form (to notify you of seminar changes):

please print; staple duplicate forms.

Mail Code:

See mail code box on address panel on reverse side

Name _____ Profession _____

Employer Name _____

Employer Address _____

Dept/Floor/Suite _____

City _____ County _____

State _____ Zip _____

Home/Cell Ph () _____

Dept. Ph () _____

*E-mail address _____

*Registrant's e-mail is required to receive your certificate of completion and registration confirmation.

3 Check tuition:

TUITION with SEMINAR MANUAL

\$199.99 – choose one of the options below:

- ☐ per person for 2 or more preregistering together —OR—
- ☐ single registration postmarked 3 weeks prior to seminar date

☐ **\$189.99** per person for 5 or more preregistering together

☐ **\$219.99** standard

ADD-ON PRODUCTS

Distributed at seminar—FREE SHIPPING!

- ☐ **\$29.99*** *Laboratory Tests Made Easy, Second Edition* book
- ☐ **\$69.95*** *High Risk Pregnancy & Delivery, 5th Edition* book

*Attendees add applicable state and local taxes except in AK, DE, MT, NH, OR

4 Indicate method of payment:

ALL REGISTRATIONS MUST BE PREPAID.
Purchase orders welcome (attach copy).

☐ Check enclosed payable to **PESI, Inc.**

☐ MC ☐ VISA ☐ AE ☐ Discover Novus
16 digits 13-16 digits 15 digits 16 digits

Card # _____

Card Exp. _____ V-Code #*: _____

Signature _____

(*MC/VISA/Discover: last 3-digit # on signature panel on back of card.)

(*American Express: 4-digit # above account # on face of card.)

CAN'T ATTEND THE SEMINAR?

See below for individual product orders

OB Emergencies

___ Seminar on DVD* (video) \$199.99 (RNV073060)

___ Seminar on CD* (audio) \$169.99 (RNA073060)

___ **Laboratory Tests Made Easy, Second Edition** book*
\$29.99 (PUB082860)

___ **High Risk Pregnancy & Delivery, 5th Edition** book*
\$69.95 (SAM012150)

CE hours and approvals on products may differ from live CE approvals.

*Shipping is \$6.95 first item
+ \$2.00 each add'l item.

**Residents add applicable state and local taxes except in AK, DE, MT, NH, OR

Product total \$ _____

*Shipping _____

Subtotal _____

**Tax _____

TOTAL _____

FOR OFFICE USE ONLY

MRC

Fed ID # 26-3896894 © 2019 PESI, Inc.